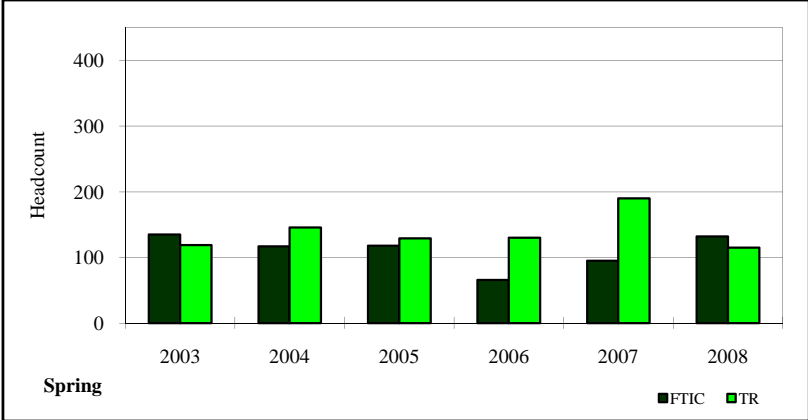
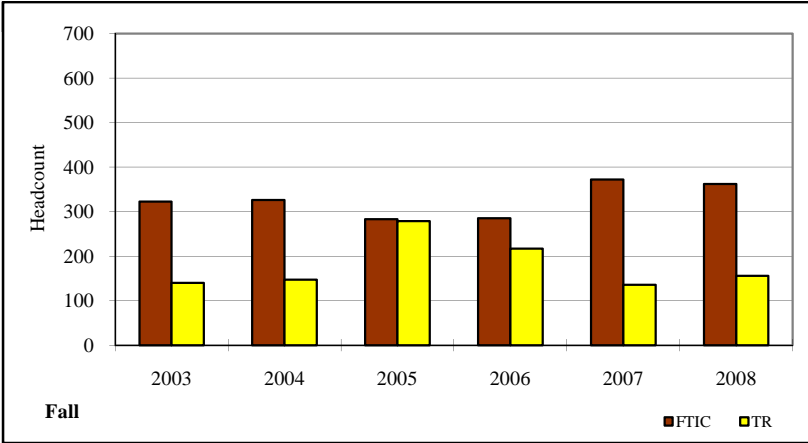


First Time (FTIC)/Transfer (TR) Enrollment, 2003-2008

		Spring					
		2003	2004	2005	2006	2007	2008
FIRST TIME IN COLLEGE		135	117	118	66	95	132
TRANSFERRED		119	146	129	130	190	115



		Fall					
		2003	2004	2005	2006	2007	2008
FIRST TIME IN COLLEGE		323	326	283	285	372	362
TRANSFERRED		140	147	279	217	136	156



Source: CBM001 Reports